

Studio Westmaas

acoustic & live recording specialists

Adres :

Stougjesdijk 13
3273 LL Westmaas

Tel. 0186-573884

Fax 0186-572284

www.studiowestmaas.nl

studiowestmaas@live.nl

Directions

1. Drive to the Rotterdam beltway, via the A13, A15, A16 or A20.
2. At the south of the beltway, take the exit towards the A29 (Zierikzee).
3. After the Heinenoordtunnel, take the exit towards Oud-Bijerland.
4. At the traffic lights turn right, in the direction of Puttershoek.
5. At the second traffic lights turn right to the N489, in the dir. of Klaaswaal).
6. Follow this road to T-junction, and turn left, onto the N217.
7. After about 30 feet turn right at the white gate, onto the driveway.
8. Follow the driveway all the way down to the dark door, and ring the doorbell.
9. Welcome. Espresso, cappuccino and tea await you.

Studio Westmaas is situated at the edge of the town of Klaaswaal. In the middle of one of the South-holland islands, the Hoeksche Waard.

Besides the route over the A29 coming from the direction of Rotterdam, there are three other routes to reach the island.

1. Using the small ferry at Spijkenisse. After the exit, turn left onto the N217, in the direction of Oud-Bijerland and Klaaswaal. At the T-junction, turn right onto the Stougjesdijk. After about 5 minutes you'll cross the A29. After another five minutes you'll arrive at the T-junction and white gate described in step 6 and 7 in the directions above. Continue from step 6.
2. Driving along the A29 coming from Hellegatsplein, Zierikzee and Vlissingen, take the exit to Oud-Bijerland. At the end of the exit, turn right. At the traffic lights turn right again. Continue from step 5 in the directions above.
3. Coming through the Kiltunnel, that can be reached taking the exit to 's-Gravendeel on the A16. Follow the N217 to the exit to Klaaswaal. Turn left towards Klaaswaal and continue from step 6 in the directions above.

Public Transport

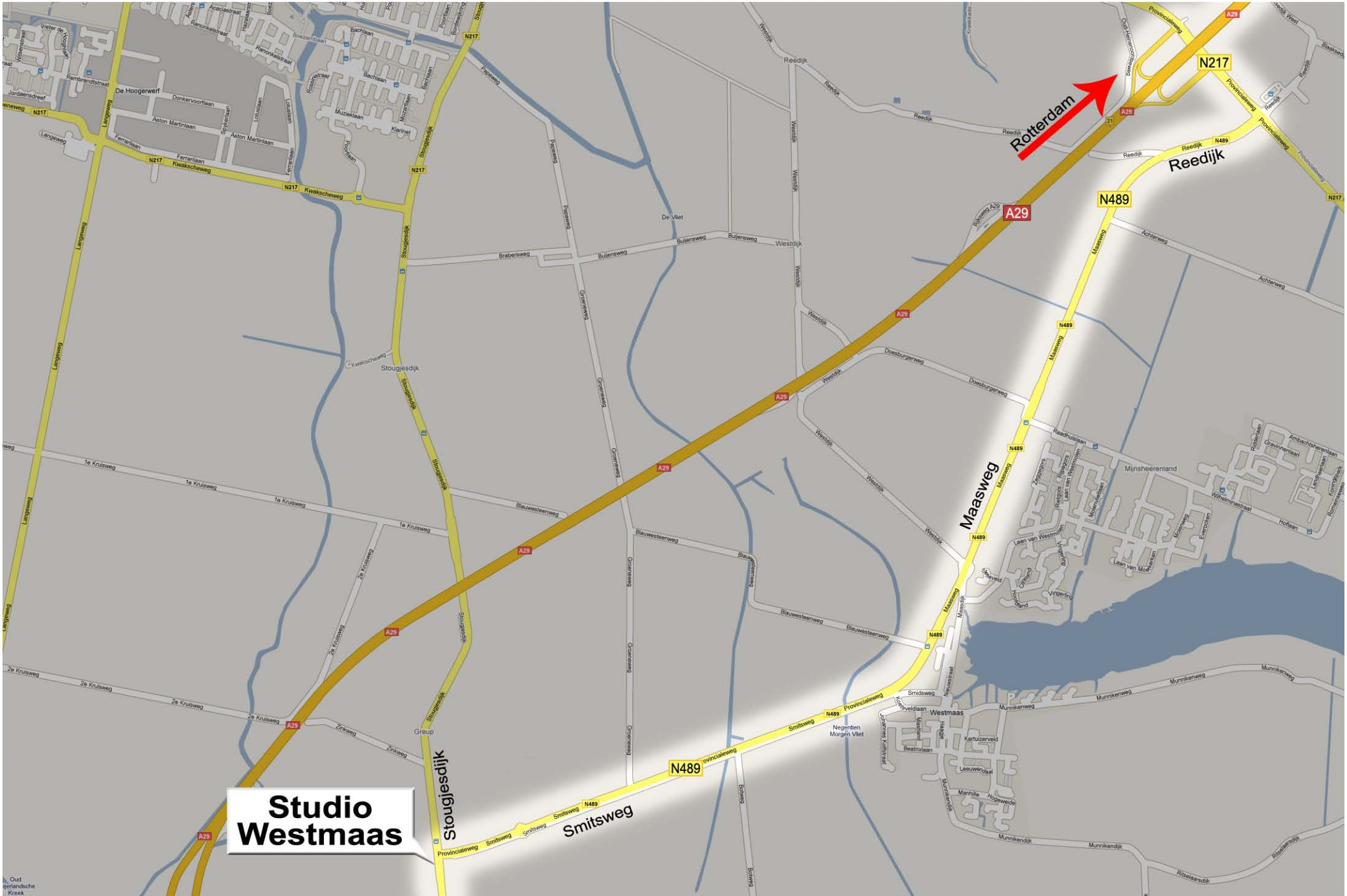
Coming from Rotterdam by bus

At Zuidplein, take busses 164 or 174 in the direction of Numansdorp.

Get off the bus at the stop Molendijk in Klaaswaal. Call us at +31 (0) 186-573884 and we'll pick you up by car within 5 minutes.

If necessary, we can pick you up by car from Lombardijen Station in Rotterdam by appointment. The drive from here takes about 15 minutes.

Please note: most navigation devices will take you through Oud-Beijerland. This takes longer than our directions.



**Studio
Westmaas**

Studio Westmaas

